

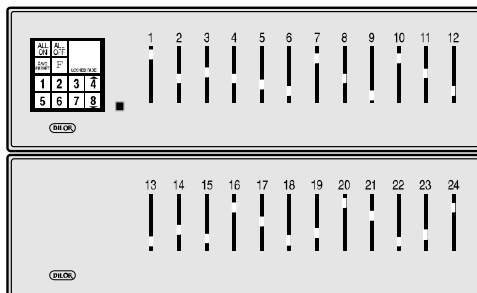
## OVERVIEW

- The ALC3 control system utilizes digital technology to provide a full range of dimming features and control options.
- The ALC3 control stations present to the user only the controls necessary for regular operation. Controls are intuitive to use and require little, if any, explanation.
- The ALC3 control system provides presets, preset sequencing, variable fade rates and proportional master control.
- Wiring of control stations to the panel requires only a 2-wire data signal connection.
- Dimming control electronic modules allow dimming of incandescent or fluorescent lighting loads.

## ALC3 Preset Activation Station with Individual Sliders



## Stacking Stations



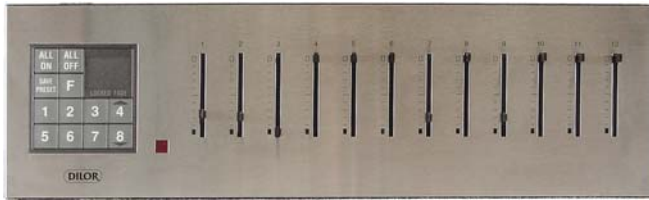
ALC3-24

## FEATURES

- Stations from 1 to 16 sliders in a single unit are available. Stations of 12 can be stacked for 24 sliders.
- Stations are equipped with 8 Presets (expandable to 64), All ON/OFF controls, 'Learn' controls and lockouts.
- Attractive membrane pushbutton controls.
- Choice of finish; concealed screws.
- Illuminated for locating in darkened rooms.
- Digital readout indicates current preset.
- Automatic 'take control' when button or slider is used.
- IR receiver for remote control.
- Protect and lockout software.
- Power failure protection.
- Low-voltage Class 2 wiring, 2-conductor data signal.

## APPLICATIONS

- ALC3 System controls are ideally suited for architectural dimming applications that demand sophisticated, easy to use controls. Presets, fade rates and numerous effects are standard.
- Typical applications are in restaurants, hotels, convention centers, boardrooms and office buildings. The ALC3 control system, when used in conjunction with ALD dimmer cabinets, provide a high-performance, reliable, economical control system that will satisfy the most discerning client's needs.
- The control station can be permanently installed in a standard electrical wall box or can be a portable station which plugs into a socket convenient to the area being controlled.



**STANDARD FEATURES**

- 8 unique presets: **expandable to 64.**
- All ON preset.
- All OFF preset.
- LED readout display.
- Programmable fade rates.
- Preset proportional master.
- Channel proportional master.
- Protect/lock software.
- Individual channel 'take control'.
- Power failure protection.

**STATION OPTIONS**

- **A** - Black anodized cover plate (custom).
- **B** - Polished brass cover plate (custom).
- **S** - Stainless steel cover plate (standard).

<b>Part Number</b>	<b>Number of Sliders</b>	<b>Size of Backbox Required*</b>	<b>Type of Wires (Data Signal)</b>
ALC3-01	1	3 Gang	#16AWG, twisted pair, unshielded (Beldon #85102)
ALC3-02	2	3 Gang	#16AWG, twisted pair, unshielded (Beldon #85102)
ALC3-03	3	4 Gang	#16AWG, twisted pair, unshielded (Beldon #85102)
ALC3-04	4	4 Gang	#16AWG, twisted pair, unshielded (Beldon #85102)
ALC3-05	5	6 Gang	#16AWG, twisted pair, unshielded (Beldon #85102)
ALC3-06	6	6 Gang	#16AWG, twisted pair, unshielded (Beldon #85102)
ALC3-07	7	6 Gang	#16AWG, twisted pair, unshielded (Beldon #85102)
ALC3-08	8	6 Gang	#16AWG, twisted pair, unshielded (Beldon #85102)
ALC3-09	9	8 Gang	#16AWG, twisted pair, unshielded (Beldon #85102)
ALC3-10	10	8 Gang	#16AWG, twisted pair, unshielded (Beldon #85102)
ALC3-11	11	8 Gang	#16AWG, twisted pair, unshielded (Beldon #85102)
ALC3-12	12	8 Gang	#16AWG, twisted pair, unshielded (Beldon #85102)
ALC3-13	13	10 Gang	#16AWG, twisted pair, unshielded (Beldon #85102)
ALC3-14	14	10 Gang	#16AWG, twisted pair, unshielded (Beldon #85102)
ALC3-15	15	10 Gang	#16AWG, twisted pair, unshielded (Beldon #85102)
ALC3-16	16	10 Gang	#16AWG, twisted pair, unshielded (Beldon #85102)
ALC3-24	24	2 x 8 Gang (included)	#16AWG, twisted pair, unshielded (Beldon #85102)

**\* Use standard wall box. Backbox not included with station unless otherwise noted.**

## ALC3-00 Preset Activation Station



## FEATURES

- A station equipped with 8 presets (expandable to 64), All ON/OFF controls, 'learn' controls and lockouts.
- Attractive membrane pushbutton controls.
- Concealed screws, choice of finish.
- Illuminated for locating in darkened rooms.
- Digital readout indicates current preset.
- Automatic 'take control' when button used.
- IR receiver for remote control.
- Protect and lockout software.
- Power failure protection.
- Low-voltage Class 2 wiring, 2-conductor data signal.

## APPLICATIONS

- A small preset station that allows occupants to operate presets and All ON/All OFF controls.
- The preset station can be used as a remote station in conjunction with a master slider station installed elsewhere.
- Typical applications are in restaurants, hotels, convention centers and boardrooms.

<b>Part Number</b>	<b>Size of Backbox Required</b>	<b>Number of Wires (Data Signal)</b>
ALC3-00	2 Gang	#16AWG, twisted pair, unshielded (Beldon #85102)

## ALC3-IR-Remote Handheld Remote Control Unit



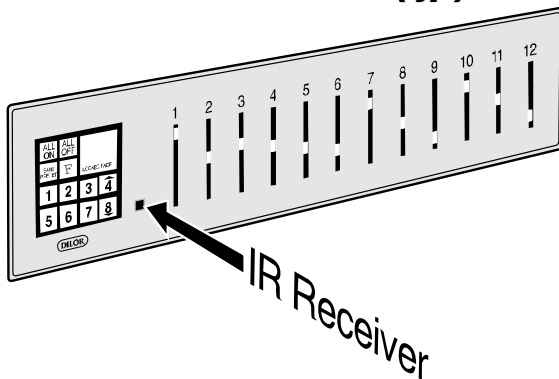
## FEATURES

- Handheld remote control unit.
- Triggers the IR receiver contained in all models of ALC3 wall or portable preset activations stations.
- Range up to 50'.
- Control is by infrared technology and requires line-of-sight signal as typical of IR controllers.
- All ON/All OFF, 8 preset and up/down proportional master controls.
- Compact and light, easily fits in hand.

## APPLICATIONS

- The ALC3-IR-Remote is ideal for presentations. Store the unit on the speaker's podium for convenient use when making presentations.
- The ALC3-IR-Remote signals an infrared receiver on the wall mounted or portable control station (see illustration at lower left). The station in turn signals the control electronics in the dimmer panel.
- Several ALC3-IR-Remote units can exist for one receiver station. Control is by infrared and requires line-of-sight considerations typical of IR devices.
- The ALC3 preset station/receiver unit should be mounted in the room where the ALC3-IR-Remote is to be used. Choose a location where the station is easy to access for manual control and within line of sight of where the remote could be used.
- The ALC3-IR-Remote has 8 presets, All ON/All OFF and up/down proportional master controls. The presets are set on the ALC3 receiver stations, they can only be actuated with the remote control.

## IR Receiver on Wall Station (typ.)



<b>Part Number</b>	<b>Dimensions</b>
ALC3-IR-Remote	5-1/2" x 1-1/2" x 1/2" requires two AAA batteries

## ALC3-12-PTB Portable Master Station



## FEATURES

- Available in 1 to 16 and in 24 slider combinations.
- Portable stations with identical features as ALC3 wall mount stations.
- Attractive black finish with oak end trims.
- Rugged desktop design.
- Supplied with 25 foot cable with 9-pin plugs.
- Automatic 'take control' when button used.
- IR receiver for remote control.
- Power failure protection. Protection & lockout software.

## APPLICATIONS

- ALC3 portable stations are ideal for installations where only preset stations are to be available to users.
- The portable station plugs into the socket of the ALC3-00-PTB Station or an ALC3-PTB Wall Socket.
- The sliders are used to set the presets.

## ALC3-05-PTB Portable Master Station connected to ALC3-00-PTB Station



<b>Part Number</b>	<b>Number of Sliders</b>	<b>Size (wide x high x deep)</b>
ALC3-01-PTB	1	9" x 5" x 3"
ALC3-02-PTB	2	9" x 5" x 3"
ALC3-03-PTB	3	11" x 5" x 3"
ALC3-04-PTB	4	11" x 5" x 3"
ALC3-05-PTB	5	13" x 5" x 3"
ALC3-06-PTB	6	13" x 5" x 3"
ALC3-07-PTB	7	13" x 5" x 3"
ALC3-08-PTB	8	13" x 5" x 3"
ALC3-09-PTB	9	15" x 5" x 3"
ALC3-10-PTB	10	15" x 5" x 3"
ALC3-11-PTB	11	15" x 5" x 3"
ALC3-12-PTB	12	15" x 5" x 3"
ALC3-13-PTB	13	17" x 5" x 3"
ALC3-14-PTB	14	17" x 5" x 3"
ALC3-15-PTB	15	17" x 5" x 3"
ALC3-16-PT	16	17" x 5" x 3"
ALC3-24-PTB	24	15" x 10" x 3"

**REPLACEMENT CABLE**

ALC3-PTB-25	25' long (includes plugs)
ALC3-PTB-50	50' long (includes plugs)

**ALC3-00-PTB  
Preset Activation Station with Socket  
(cover plate removed)**



**FEATURES (ALC3-00-PTB)**

- The station has a hidden socket for connecting a portable master station. Remove the cover plate to access the socket.
- The socket is assigned so that a portable station can be plugged in and its sliders control the appropriate circuits.
- The control operation and features are identical to the ALC3-00 master station:
  - 8 presets (expandable to 64).
  - All ON/OFF controls, 'learn' controls and lockouts.
  - Attractive membrane pushbutton controls.
  - Choice of finish; concealed screws.
  - Illuminated for locating in darkened rooms.
  - Digital readout that indicates current preset.
  - Automatic 'take control' when button used.
  - Protection and lockout software.
  - Power failure protection.
  - Low-voltage Class 2 wiring, 2-conductor data.

**ALC3-PTB  
Wall Socket for Portable Station**



**APPLICATIONS (ALC3-00-PTB)**

- For installations where there is a preset station but no master slider stations to be installed, the preset station can be ordered with a hidden socket. The hidden socket enables a portable master station to be connected to set the presets.
- The socket of the preset activation station will automatically assign the sliders of the portable master station to the correct dimmers. If the portable station has more sliders than necessary for the area, they will be inoperative. This allows the same portable station to be used for other areas.

**APPLICATIONS (ALC3-PTB )**

- The ALC3-PTB Socket is useful for installations where a portable station must be located remote to the preset activation station.

<b>Part Number</b>	<b>Size of Backbox Required</b>	<b>Number of Wires (Data Signal)</b>
ALC3-00-PTB	2 Gang	#16AWG, twisted pair, unshielded (Beldon #85102)
ALC3-PTB	2 Gang	#16AWG, twisted pair, unshielded (Beldon #85102)

## ALC3-PTNSW-2DS Partition Switch



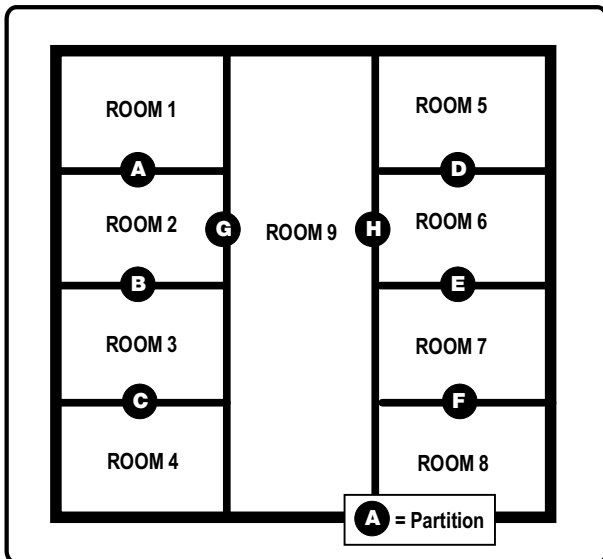
## FEATURES

- The keyswitch-operated station signals the system when room dividers are closed or open.
- Stations with 1 to 7 switches (one for each partition) are available. For larger applications, use an ALC3-CAP Station.
- Keyswitch operation prevents unauthorized use.
- Open/closed LED indicator on each keyswitch.
- Simple to operate.

## APPLICATIONS

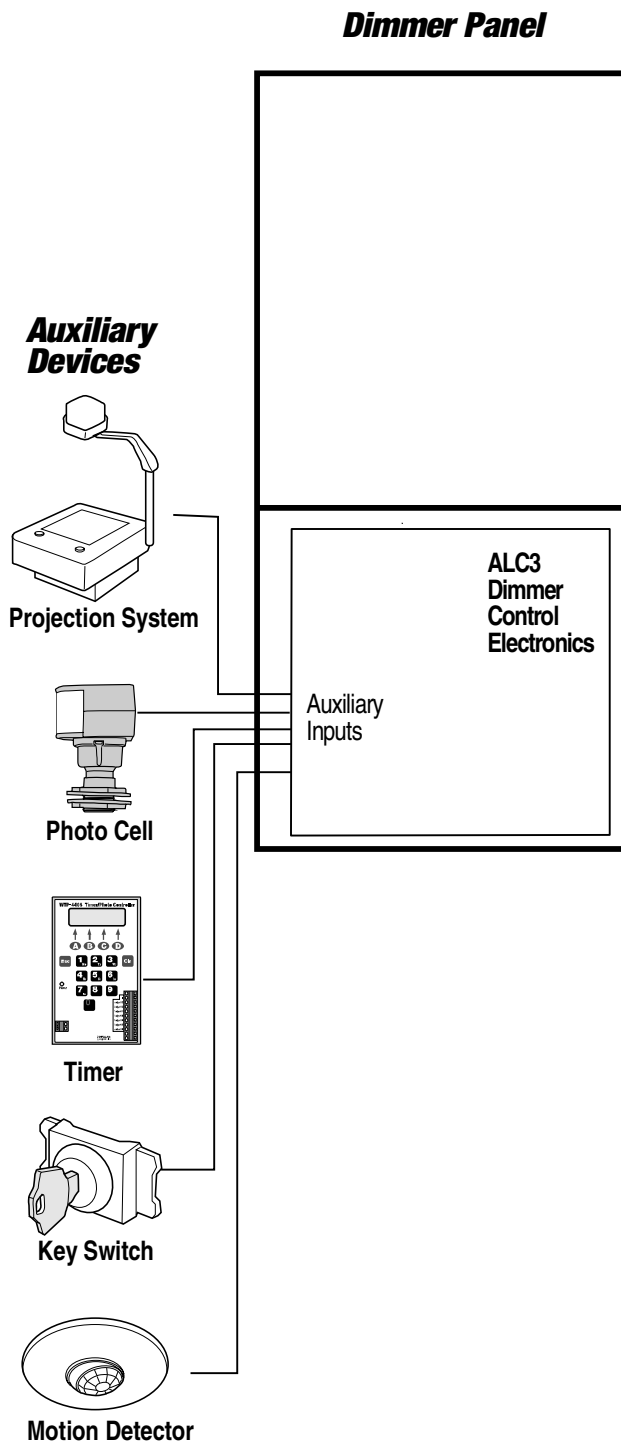
- Many hotels and conference centers incorporate movable partitions to provide the appropriate space for each client's functions. If a ballroom is partitioned into 2 rooms, the control station in each room must operate only within that room. If the ballroom partition is opened, the ballroom becomes one large room and both control stations must then operate the entire room.
- The ALC3-PTNSW Partition Station signals the ALC3 dimmer control electronics whenever a partition is open or closed.
- In larger applications where there are many partitions, ALC-CAP panels are available. A graphic display depicting the partition locations ensures a simple, user-friendly method of control. Contact the Dilor Factory for options and pricing of ALC-CAP graphical panels.

## ALC3-CAP Graphical Panel with Divider Controls on Graphic



<b>Part Number</b>	<b>Size of Backbox Required*</b>	<b>Number of Wires</b>
ALC3-PTNSW-1DS	1 Gang	2 - #18AWG
ALC3-PTNSW-2DS	2 Gang	3 - #18AWG
ALC3-PTNSW-3DS	3 Gang	4 - #18AWG
ALC3-PTNSW-4DS	4 Gang	5 - #18AWG
ALC3-PTNSW-5DS	5 Gang	6 - #18AWG
ALC3-PTNSW-6DS	6 Gang	7 - #18AWG
ALC3-PTNSW-7DS	7 Gang	8 - #18AWG
ALC3-CAP**	Custom**	Custom**

*\*Use standard wall box. \*\*Consult Factory for options.*

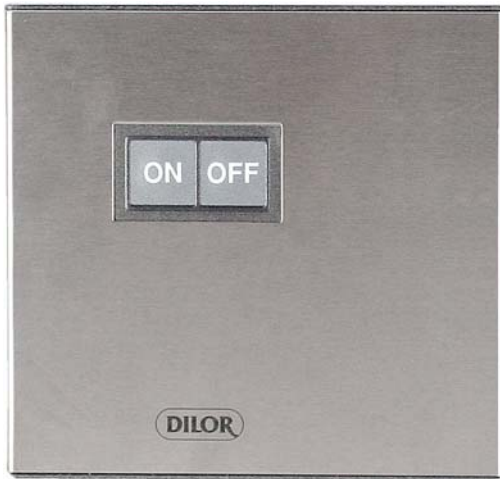
**FEATURES**

- ALC3 Dimming Systems can integrate miscellaneous devices to activate dimmers.
- A device with a momentary contact or a maintained contact can be interfaced with the Dimmer Control Electronics in the ALC3 Dimmer Panel.
- Upon contact signal from the device, either an ALL ON, ALL OFF or a Preset scene can be activated.

**APPLICATIONS**

- Time clocks and photocells are often used in mood lighting applications. The photocell indicates that dusk is occurring. The photocell activates a preset that brings the lights up (or down in some cases). Usually, a long fade rate is used so that occupants are unaware of the lighting change. The timer can be used at the end of the evening (for instance 12:00 am) to signal all of the lights to turn OFF.
- A/V (Audio/Visual) interfacing can be accommodated. A projection system can signal the dimming controls to activate a preset to lower the house lights. At the end of the presentation, the house lights can be raised by actuating another preset. This has application in movie theaters as well.
- Motion detectors can be used to switch lights OFF in occupied meeting rooms. When no motion is sensed for an extended period, the detectors will time out and signal the lights OFF.

## ALC3-RS Remote Convenience Station



### FEATURES

- A simple ON/OFF convenience station.
- Attractive membrane pushbutton switches.
- Concealed screws, choice of finish.
- ON switch can be reassigned to activate a preset.
- Automatic 'take control' when button used.
- Installs in standard 2 gang electrical box.
- Low-voltage Class 2 wiring.

### APPLICATIONS

- The ALC3-RS remote stations are small convenience stations that are usually located near entrances. They are commonly used as janitorial or panic stations.
- The ALC3-RS station's ON push button will bring the lights of selected circuits to full ON when pressed. The OFF push button will dim the lights to full OFF when pressed.
- The ON button can be re-assigned to activate a preset instead of the ALL ON function.

<b>Part Number</b>	<b>Size of Backbox Required</b>	<b>Number of Wires</b>
ALC3-RS	2 Gang	#18AWG, dedicated wires. Do not connect to data signal.

## **ALC3 Dimming Control Software on Laptop PC**



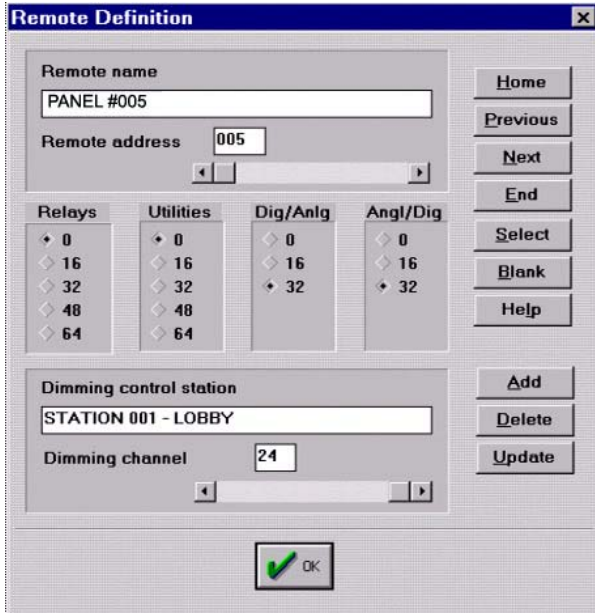
The ALC3 Central PC Control System is ideal for monitoring many control zones from a central location. All of the ALC3 software features are accessible through a standard desktop or laptop PC. Timed schedules for any of the presets in any of the zones are programmable right from your PC, providing a fully automated dimming control system.

### **FEATURES**

- Fully functional graphic representations of ALC3 preset master dimming control stations. Stations from 1 to 24 sliders can be defined and displayed as a dimming station on the monitor.
- The ALC3 control station displayed on the monitor includes the same controls as an actual physical station:
  - Dimmer channel sliders,
  - ON/OFF buttons,
  - 8 preset buttons (expandable to 64),
  - fade rate settings,
  - preset programming controls,
  - lockouts.
- Presets can be scheduled to actuate at a set time or when another event occurs (for example, a photocell signal at sunset).
- Preset schedules can be combined with Douglas ON/OFF relay schedules.

### **APPLICATIONS**

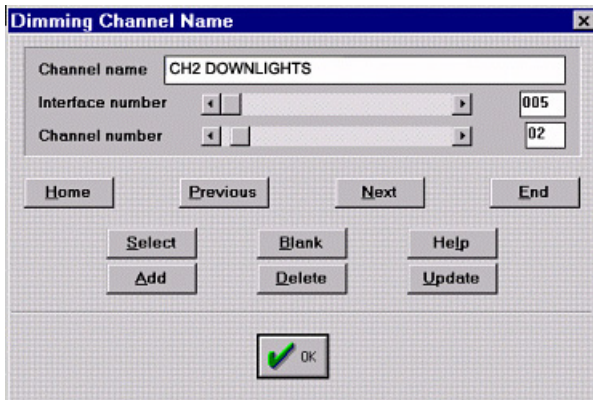
- The ALC3 Central PC Control System, used in conjunction with ALD Dimmer Panels, provides a high performance dimming control system for sophisticated installations such as hotels, convention centers and stadiums.
- Interface cards, which enable PC connection to dimmer panels, can be networked to allow control of the dimming functions for an entire facility from one single, conveniently located PC.
- The PC interface software can display current dimming levels, actuate presets, program presets, and schedule when presets are to occur. Presets associated with a field-mounted control station can be set at the control station or at the computer. This provides a method of saving and/or overwriting presets.
- The Dilor ALC3 dimming control software can be integrated with Douglas low voltage lighting control software. Thus, the same control system can be used for dimming as well as ON/OFF lighting controls. This integrated system offers the facility owner or manager a single resource for managing all of their facility's lighting controls.



## Remote Definition Screen

The Remote Definition Screen lets you name the dimming stations and define the number of control channels associated with each station.

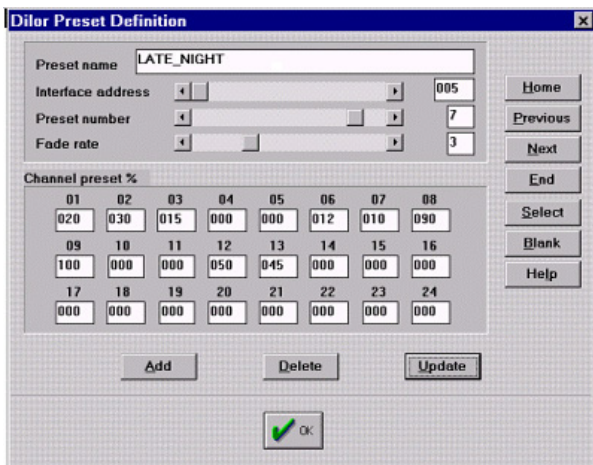
You link the station defined to the actual physical station by specifying its interface card address.



## Dimming Channel Name Screen

The Dimming Channel Name Screen allows you to label each of the dimming control channels of a station to identify each of the different lighting groups you are controlling.

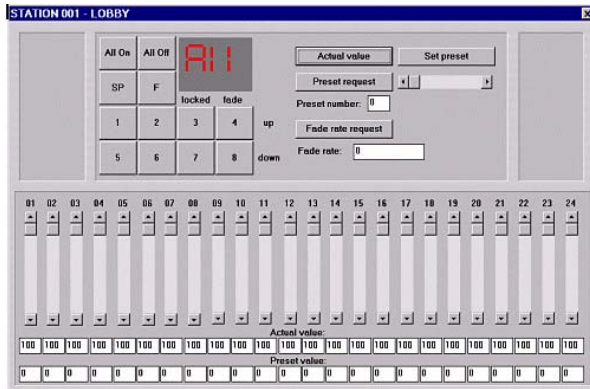
This feature eliminates confusion and is especially convenient for reports you may wish to print.



## Preset Definition Screen

The Preset Definition Screen is where the preset names and preset channel levels are selected and stored.

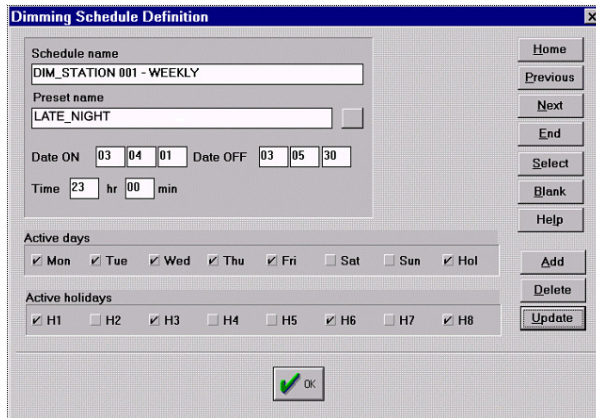
Should a preset be changed at the wall station, you can download the original preset back into the system.



## Control Station Screen

The Dimming Control Station Screen provides an interactive image of an actual control station.

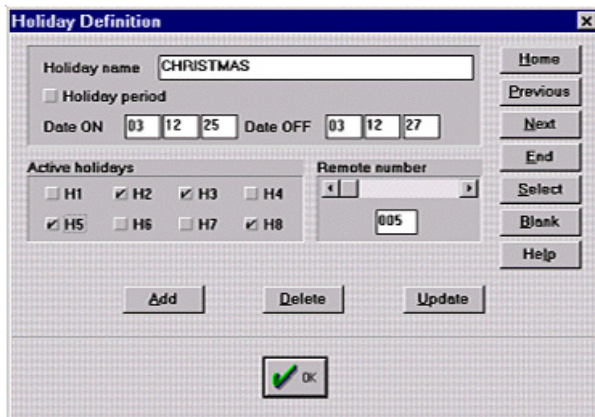
The screen allows you to adjust channel levels and activate presets for the control station by using the mouse. You can also program presets and set fade rates for the control station from this screen.



## Dimming Schedule Definition Screen

The Dimming Schedule Definition Screen allows you to set time-based schedules for actuating presets.

Scheduling can be done on a 7-day (weekly) basis and/or can be on a date basis when required (Christmas season scheduling, etc.).



## Holiday Definition Screen

The Holiday Definition Screen allows you to define holidays and to set a different time schedule for holiday events.

## OVERVIEW of PC INTEGRATION with ALC3 SYSTEM

