

# LitePak



**DOUGLAS**  
lighting controls

# LitePak Panels

## LitePak-8

- LitePak panels can be supplied with EIGHT Douglas HID relays or FOUR Douglas 480V 2-pole relays, a Time/Photo Controller and a transformer power supply.



## LitePak-16

- LitePak panels can also be supplied with SIXTEEN Douglas HID relays or EIGHT Douglas 480V 2-pole relays, a Time/Photo Controller and a transformer power supply.



- Use to control any type of lighting load
- Multi-feature time/photo controller
- Heavy duty, HID, latching relays with indicator and manual override
- Available in two panel sizes, one with 8 relay outputs, or one with 16 relay outputs
- Expand with Expansion Panels
- Remote switch options
- Photo sensor options
- California Energy Commission Title 24 approved

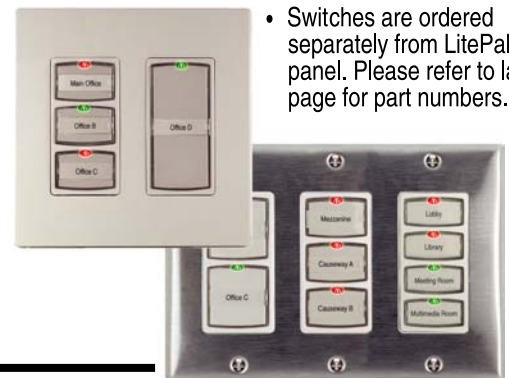
## Remote Photo Sensor



- Specialized photo-electric controls are possible when the remote light sensor is connected.
- Sensor part number: WPS-5527K. Sensor optional and is ordered separately from LitePak panel.

## Remote Switches

- LitePak relays can be controlled by all standard Douglas low voltage 2-wire switches. A wall switch can be connected in parallel with the controller output to the relay.
- The controller also has 1 group input which accepts a standard Douglas 2-wire switch. The group input can be set to switch some or all of the outputs.



- Switches are ordered separately from LitePak panel. Please refer to last page for part numbers.

**to Expansion Panel**

## LitePak Time/Photo Controller (WTP-4418)

- Electronic, 365-day astronomic time/photo controller for switching Douglas 2-wire relays.
- 4-Line graphical display with built in prompts to guide viewing and editing of programs.
- Up to 900 events can be programmed into the LitePak controller.
- The controller has 8 outputs. Each can be operated by a unique program and with unique photo sensor settings. Up to 4 relays can be connected to an output.

### Features:

- Time Control: 7-day SMTWTFSS schedules and holiday DATE schedules.
- Astronomic Control: calculates sunset and sunrise with the astronomic function. An offset of  $\pm 180$  minutes can be set from the calculated time.
- Photo Sensor Control: set unique light level setpoints for each output. Requires optional WPS-5527K Photo Sensor. Sensor range is 0 to 6,500 footcandles.
- Switching Options: outputs can be set to switch ON, OFF, OFF with flick warn, and can do Sentry® Switch OFF commands.
- Time-out Option: the controller outputs can be set to monitor connected relays. Should the relay be switched ON, the output will switch it OFF after a pre-set time. This feature can be scheduled to function during unoccupied periods.
- Group Override Switch: a switch input is supplied that can be set to switch all or some of the outputs ON or OFF.
- Daylight Savings & Leap Year: the controller automatically adjusts for leap years & Daylight savings. Daylight savings option can be switched OFF if not required.
- Memory & Time: when power is lost, the controller's programs are held indefinitely and the time is maintained for 72 hours.



**LitePak Time/Photo Controller Module**

## LitePak Expansion Panels

- To expand a system use an expansion panel. Expansion panels come with relays only and are connected to the controller in a standard LitePak panel.
- Up to 4 relays can be connected to an output of the controller. There are 8 outputs on the controller for a theoretical maximum of 32 relays. If more than 24 relays need to be controlled, it is recommended that full-sized pre-assembled Douglas relay panels be used. Panels up to 72 relay capacity are available and they can be connected together to form larger systems.
- For larger systems, consult factory about pre-assembled products and systems. For information about Douglas products, visit [www.DouglasLightingControls.com](http://www.DouglasLightingControls.com)



**8 or 16 HID, 1-pole Lighting Relays (Standard Configurations)**



**4 or 8 HID, 2-pole Lighting Relays (480V Option)**



to LitePak Panel

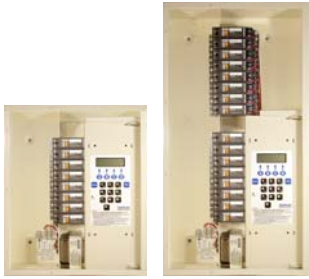
## 2-Wire HID Relays

- Suitable for all types of lighting loads including capacitor corrected HID ballasts. 2-wire latching relay technology.
- Manual override lever & ON/OFF indicator built into relay.
- Operable with remote switches.
- Lighting load rated for 20A branch circuits. Voltage ratings:  
120/277/347V 1-pole relay.  
208/480V 2-pole relay.
- 480V applications use a 2-pole relay to switch the two 277V hots that supply the load fixture. 480V LitePak panels have space for FOUR or EIGHT 2-pole relays.
- Approvals: UL / CSA.

**DOUGLAS**  
lighting controls

## LitePak Panels, Parts and Accessories

### 120/277/377V LitePak Panels



- Surface or flush mounted, hinged, lockable panel
- 8 or 16, 1-pole Douglas Relays Rated for: 120, 277, 347V applications
- 120/277 Transformer power supply
- WTP-4418 Controller module and mounting frame

WPAK-33518-S	LitePak Panel, Surf Cov, 8 relays, Controller, 120/277V
WPAK-33318-S	LitePak Panel, Surf Cov, 8 relays, Controller, 120/347V
WPAK-16-3351-S	LitePak Panel, Surf Cov, 16 relays, Controller, 120/277V
WPAK-16-3331-S	LitePak Panel, Surf Cov, 16 relays, Controller, 120/347V
WPAK-33018-S	LitePak Expansion Panel, Surf Cov, 8 relays only

Change "-S" suffix to "-F" for Flush mount cover

### 480V LitePak Panels



- Surface or flush mounted, hinged, lockable panel
- 4 or 8, 2-pole Douglas relays Rated for 277/480V applications
- 120/277 Transformer power supply (Use 277 connection)
- WTP-4418 Controller module and mounting frame
- Note: Expansion panels with 2-pole relays can be controlled with the 24V from a 120/277 panel

WPAK-33524-S	LitePak Panel, 4 2p-277/480 Relays, Controller, 120/277V
WPAK-16-3352-S	LitePak Panel, 8 2p-277/480 Relays, Controller, 120/277V
WPAK-33024-S	LitePak Expansion Panel, 4 2p-277/480 Relays only

Change "-S" suffix to "-F" for Flush mount cover

### Photo Sensor



- Auto Ranging 0 to 6,500 footcandles (0 to 65,000 Lux)
- Sensor Wire: 2 conductors Max wire length: 500' (150m) Wire type: #18 AWG, unshielded Connection has no polarity
- Exterior/Interior Mount
- Operating temp is from -50°F to +120°F ambient
- When mounting outside, attempt to mount sensor so that it is protected from weather.

WPS-5527K	Remote Photo Sensor
-----------	---------------------

### WTP-4418 Time/Photo Controller Module



- Controller module is included with LitePak panels. Controller module is NOT included with Expansion panels.
- To install or remove controller, undo the hinge screw that holds the controller mounting frame in place. Insert or remove entire frame and controller and plug/unplug wire control harness.
- Indoor, stationary, non-vibrating, non-corrosive atmosphere and non-condensing humidity.
- Ambient storage & operating temperature: 32°F to +140°F (0°C to +60°C)

WTP-4418	Time/Photo Controller Module for LitePak panel (includes metal mounting frame)
----------	--

## Remote Switches & Switch Stations

### Switch Modules, fit into standard gang boxes



WR-8601	1 Rocker Switch Module with ON & OFF LEDs
WR-8602	2 Rocker Switch Module with ON & OFF LEDs
WR-8603	3 Rocker Switch Module with ON & OFF LEDs
WR-8604	4 Rocker Switch Module with ON & OFF LEDs
WRK-8611	Key Switch Module, ON/OFF Bi-colored LED
WRK-8692	Switch Station Lock out Module

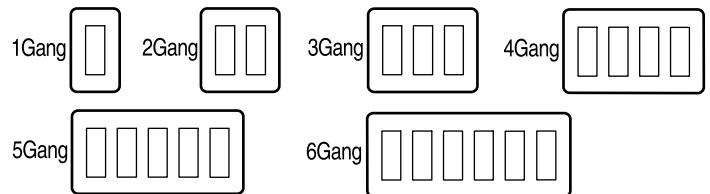
### Switch Plates



- WN-9740x- series stainless steel cover plates.
- c/w screws.



- WN-8030x- series plastic cover plates.
- White color, semi-gloss finish.
- Snaps onto switch module frame.



Stainless	Plastic	Size
WN-97401	WN-80301-SW	1Gang
WN-97402	WN-80309-SW	2Gang
WN-97403	WN-80311-SW	3Gang
WN-97404	WN-80312-SW	4Gang
WN-97405	WN-80321-SW	5Gang
WN-97406		6Gang

[www.DouglasLightingControls.com](http://www.DouglasLightingControls.com)

ph: (604)-873-2797 fax: (604)-873-6939

**DOUGLAS**  
lighting controls